

B&C ID.001 /WOMEN - 007



REGULAR FIT

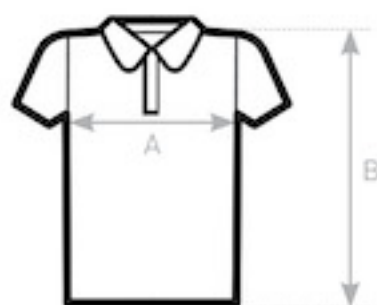
- Short-sleeved Piqué Polo Shirt
- 1x1 rib flat knitted collar
- Necktape
- 2-button placket reinforced with fusible interlining
- Matching colour buttons
- Side seams
- Feminine cut



- 100% pre-shrunk ring-spun cotton
HEATHER GREY: 90% PRE-SHRUNK RING-SPUN COTTON - 10% VISCOSE
- Piqué
- 180 g/m²
- XS - S - M - L - XL - 2XL - 3XL
- 5 pcs/pack & 50 pcs/carton



**DUO♂
CONCEPT**
with B&C ID.001



SIZES [CM]

B&C ID.001 /WOMEN PW 111	XS	S	M	L	XL	2XL	3XL
A HALF CHEST	41	44	47	50	53	56	59
B BODY LENGTH FROM NECK POINT	61	62,5	64	65,5	67	68,5	70

